

Entirely unique to the TerrAdaptor™ is the ability to adjust the head angle in multiple directions

The standard tripod is best used for confined space rescue and direct lift from a hole



TerrAdaptor™ Specifications

Weight: 90 lbs (40.823 kg)

Standards applicable: NFPA 1983 (2012) G, CE, EN 795

Color: Orange and gray

The TerrAdaptor™ isn't just for straight lifts over holes. Its variability enables you to use it over an edge, in an elevator shaft, over a trench, or atop a grain bin.

- Symmetric tripod and quadpods are the only systems of their kind to be certified by UL to NFPA 1983 (2006 ed.)
- The TerrAdaptor can be used in countless non-standard configurations
- Reaches a height of 10 ft., but additional leg extensions (approximately 4 ft.) can be bought
- To transition your tripod to a quadpod, you can purchase the Quadpod Attachment Kit separately

SM230100N

COMPLIANT NFPA 1983 (2012), G CE EN 795

TerrAdaptor™ Portable Anchor System



The Rocker Foot is the next generation of the Ball Foot—it provides more surface area, greater lean angles, and three full-size lash points that are easy to clip at extreme angles

<p>A-Frame/Bipod Great high directional for offsets and highlines</p>	<p>Gin Pole/Monopod Perfect option for a light-weight high directional</p>
<p>Horizontal Span Best for collapse or trench rescue</p>	<p>Easel Leg Tripod Easel leg provides extra support to A-Frame</p>

Symmetric Tripod

HEIGHT	MBS	APPLICABLE STANDARDS
4'	12,200 lbf	NFPA, CE, ASTM
7'	12,100 lbf	NFPA, CE, ASTM
13'	4,600 lbf	

Gin Pole/Monopod

HEIGHT	MBS	APPLICABLE STANDARDS
8'	4,500 lbf	N/A

A-Frame/Bipod

HEIGHT	MBS	APPLICABLE STANDARDS
7'	5,600 lbf	ASTM

Horizontal Span

SPAN	LEG TUBES	MBS	APPLICABLE STANDARDS
4'	SINGLE	5,600 lbf	N/A
4'	DOUBLE	8,200 lbf	N/A
6'	SINGLE	3,500 lbf	N/A
6'	DOUBLE	5,900 lbf	N/A
8'	DOUBLE	4,000 lbf	N/A

Symmetric Quadpod

HEIGHT	MBS	APPLICABLE STANDARDS
4'	13,000 lbf	NFPA, CE, ASTM
7'	12,200 lbf	NFPA, CE, ASTM
13'	V,100 lbf	ASTM



Quadpod Attachment System:

- Head attachment
- Leg kit with rocker foot
- Hobble plate and basket
- Center leg clamp with 3 load locking pins each
- Main attachment pin
- Rope hobble section

SM230105 \$1,295.00

Quadpod provides greater strength and a smaller footprint

Increase your TerrAdaptor's™ capabilities with these attachments



Articulating Foot

- Swivels on a stainless steel ball
- For extreme wide angles it can rotate to a flat position
- Rubber pad allows it to be used on concrete

WEIGHT: 1.02 lbs (460 g)
SM230530 \$115.00



Talon Foot

- Two spikes allow it to perch on edges of walls and catwalks
- Lashes securely to pipes, beams and rails

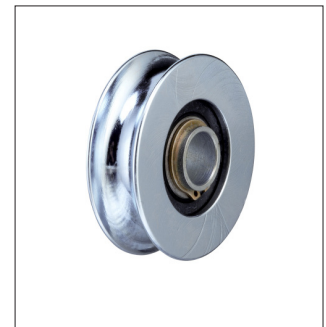
WEIGHT: 5.7 oz (161 g)
SM230510 \$38.00



QuickLash

- Install an auxiliary anchor point at any time
- Ideal for attaching gear to assist with tie backs, redirects and tie-downs
- 30 kN strength when loaded straight along major axis

WEIGHT: 4.2 oz (118 g)
SM230370 \$48.00



Sheave Assembly

- Seamless connector maintaining the NFPA strength ratings
- Zinc plated hardened alloy steel sealed ball bearings
- Supports up to 1/2" diameter cable or rope

WEIGHT: 4.0 oz (114 g)
SM230360 \$40.00